

## Cruise & Fish

### Rotorua, Bay of Plenty

#### Fly Fishing



Cruise and Fish Rotorua offer fly fishing adventures and fishing charter packages for rainbow and brown trout. Rotorua is a water playground with over fifteen lakes in the region and rivers that offer world class trout fishing. Cruise and Fish provide professional fly fishing guides to guide you on the local rivers with access by 4WD, boat or helicopter. Their cruising boat the 'Nimue' comes fully equipped with everything you need for fishing or lake cruising and a chance to catch one of Lake Tarawera's trophy rainbow trout. Fish and explore Lake Tarawera's natural hot water springs, bush walks, the Tarawera river and falls. Swim and relax.



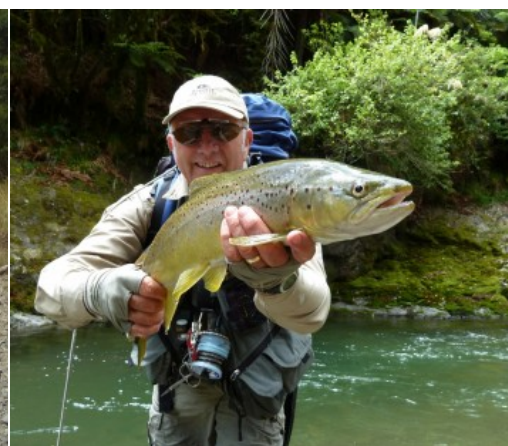
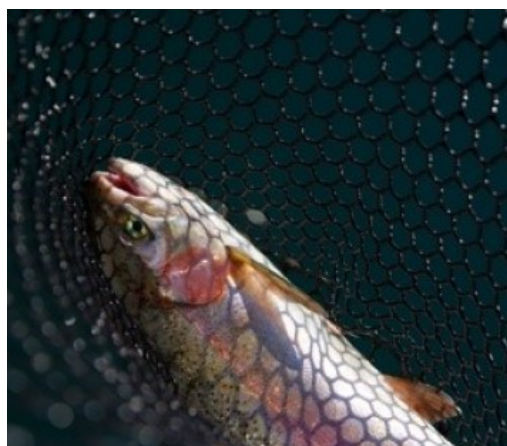
## Fly Fishing

Professional fly fishing guides John Hamill and Hamill Guiding provide you with a personalised fly fishing adventure for brown and rainbow trout on the legendary rivers, streams, and lakes in the Rotorua and Taupo regions of New Zealand. Choose from a half-day on a local stream to full day and multi-day helicopter adventures in the New Zealand wilderness. All experience levels catered for. John is renowned guide and member of the New Zealand Professional Fishing Guides Association. Pick up is from your accommodation and your guide can organise equipment as required.

Depart flexible | Duration half / full day

**Price: \$550 to \$875**

Half day / Full day for 1-2 people



## Directions

For fly fishing trips pick-up is from your accommodation.

Lake Tawawera trips depart from Kariri Point Boat Ramp on Lake Tawawera, 15 minutes from central Rotorua.

## Terms

## Cruise & Fish

### Rotorua, Bay of Plenty

#### Fly Fishing



**CHILD POLICY** Family Friendly

**CANCELLATION** 7 days 100% | 30 days 50% | cancellation due to weather or unforeseen reasons Full Refund

**SEASONAL** 1 October until 30 June (lake), 1 April - 30 September (shore)

## Contacts

+64 21 951 959

M: 021 951 959

Contact: John Hamill

Pick-up from Rotorua accommodations

Website: [www.cruiseandfish.co.nz](http://www.cruiseandfish.co.nz)

Email: [info@cruiseandfish.co.nz](mailto:info@cruiseandfish.co.nz)

## Accommodation in this area

- [Koura Lodge](#)