

# Pihopa Retreat

## Nelson, Nelson Region

### Luxury Accommodation



Set in the heart of Nelson City yet hidden away in a beautiful and private landscaped setting, Pihopa Retreat is a calm haven for you to return to after a day enjoying the Nelson Tasman area. Pihopa Retreat is located in Bishopdale and has for 130 years been a focal point in the life of the Nelson Diocese and its history is closely associated with the development of Nelson. With its historic chapel, residence, well-kept grounds, and protected trees. It is a unique area.

The homestead itself has been here for almost 100 years and is steeped in history and has one of New Zealand's oldest chapels on-site. Once the home of the Anglican bishops of Nelson, *pihopa* means bishop in Maori, and rooms are named after those that used to live here.

Here in the top of the South Island, you'll discover a place that has something to offer for everyone. Whether you are here for adventure, the outdoors, or exploring the stunning natural landscapes – it's all in easy reach. Relax on the best beaches in New Zealand, or discover the culture and arts scene for which Nelson is famous. Soak up the best food and wine – Nelson offers it all, within a stone's throw from Pihopa Retreats' doorstep.

Pihopa Retreat offers you a luxurious setting to relax and recharge, whether you want to swim in the pool, bathe in the spa, or rest on your balcony listening to the birdlife.

With sustainability at the heart of their ethos and used as the foundation when establishing Pihopa Retreat the aim was always to have as low an impact as possible on the surroundings to ensure that it stays beautiful for the visitors of the future.



## Accommodation

Six luxury suites, provide a very comfortable home away from home. Large spacious villas, decorated to the highest standard each with a bedroom and lounge area to relax in. Each suite has a balcony to enjoy the birdlife outdoors, plus a gas fire to snuggle up beside inside. Each suite has a kitchenette with tea and coffee-making facilities, including a Nespresso machine. Bathrooms are spacious with his & her sinks, rain showers, and jacuzzi baths.

## Meals

- Chef cooked breakfast in Homestead
- Pre-dinner drinks and canapes

## Facilities

- Pool
- Spa
- Chapel for weddings
- Mature landscaped grounds
- Courtesy transfer to Nelson restaurants

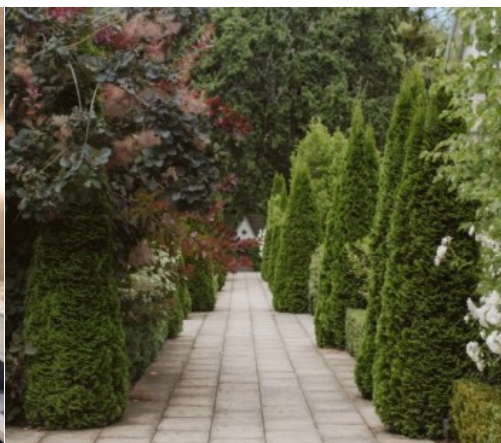
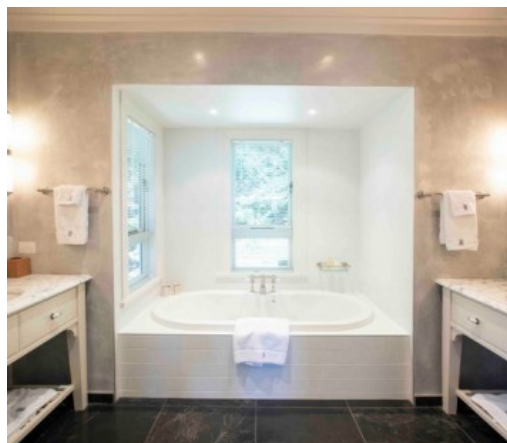
**Price: \$1,180 to \$1,380**

6 SUITES | 12 GUESTS

# Pihopa Retreat

## Nelson, Nelson Region

### Luxury Accommodation



## Directions

Situated halfway between Nelson Airport and the centre of town, taking about 7 minutes in either direction.

## Terms

**CHILD POLICY** one child under 12 welcome in each suite.

**SEASON** we are open year round

**CHECK-IN** 2pm | **CHECK-OUT** 10am

**CANCELLATION** 7 days 100%

## Contacts

+64 22 390 4463

M: 022 390 4463

Contact: Sarah

225 Waimea Road, Bishopdale, Nelson

Website: [www.pihoparetreat.nz](http://www.pihoparetreat.nz)

Email: [info@pihoparetreat.nz](mailto:info@pihoparetreat.nz)

## Recommendations

Nelson is famous for its beaches, artists' studios, artisan food & wine tours, cycle trails and its Saturday market. An adventure playground, Nelson is close to Abel Tasman, Kahurangi and Marlborough Sounds National Parks and some excellent mountain biking trails.

## Activities in this area

- [Abel Tasman Luxury Boat Cruise](#)
- [Clifftop & Beach Horse Treks](#)
- [Heli Adventures Nelson-Marlborough](#)
- [Abel Tasman Cruise & Walk](#)
- [Private Wine, Art & Wilderness Tours](#)
- [Abel Tasman Eco Boat Tour](#)
- [Cycle Tours around Nelson Tasman](#)
- [Guided Kayak Tours & Rentals](#)
- [Abel Tasman & Golden Bay Day tours & Scenic Flights](#)
- [Private wine tours](#)